

Light Vehicles

Guideline:

This document provides certification for the restraint of light vehicles for Pickles Auctions or its subcontractors. Alternative load restraint systems or methods may be used provided they are supported by testing or engineering advice that demonstrates compliance with the current NTC Load Restraint Guide performance standards.

Applies to:

- Road transport to the performance standards of the NTC Load Restraint Guide.
- Restraint of Light Vehicles upto 2000kg.

Load Restraint Equipment:

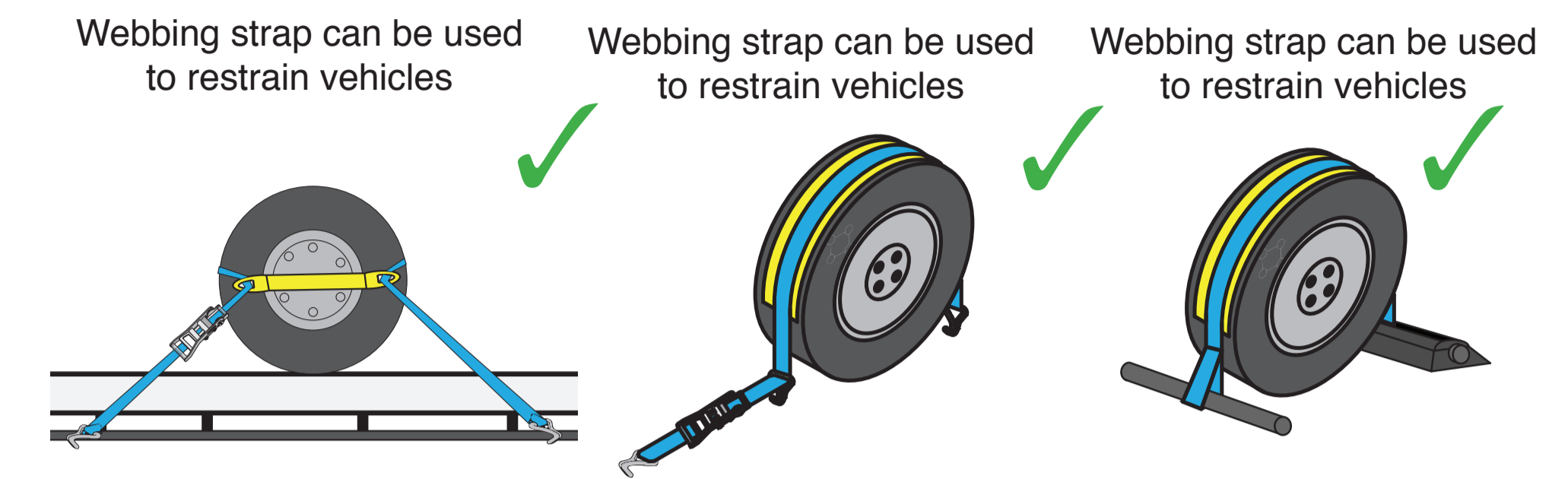
- ✓ 8mm & 10mm transport chain, conforming to AS/NZ 4344 tensioned to a minimum average pre-tension across the load of 750kg.f.
- ✓ 50mm webbing, conforming to AS/NZS4380 tensioned to a minimum average pre-tension across the load of 300kg.f.
- ✓ Equipment must be in good working order. Inspect the chains and webbing for wear regularly.
- ✓ All fittings must be in good condition and have at least the same rated capacity as the lashing being used.
- ✗ Chains with excessively damaged, worn or bent links must not be used.
- ✗ Over center lever load binders (dogs) are a high risk and are not to be used.
- ✓ Ausbinders, Turnbuckle ratchets, Web-dog binders or similar are a suitable alternative to dogs provided the minimum pre-tension specified above can be achieved.

Key Requirements:

- ✓ Items can blow out of vehicles that are missing windows during transport. Remove all loose items from these vehicles.
- ✓ Loose bonnets, boots and doors must be secured with webbing straps.
- ✓ Vehicles less than 2000kg can be restrained using webbing straps on wheels see page 3.
- ✗ Recovery winches are not suitable for load restraint.

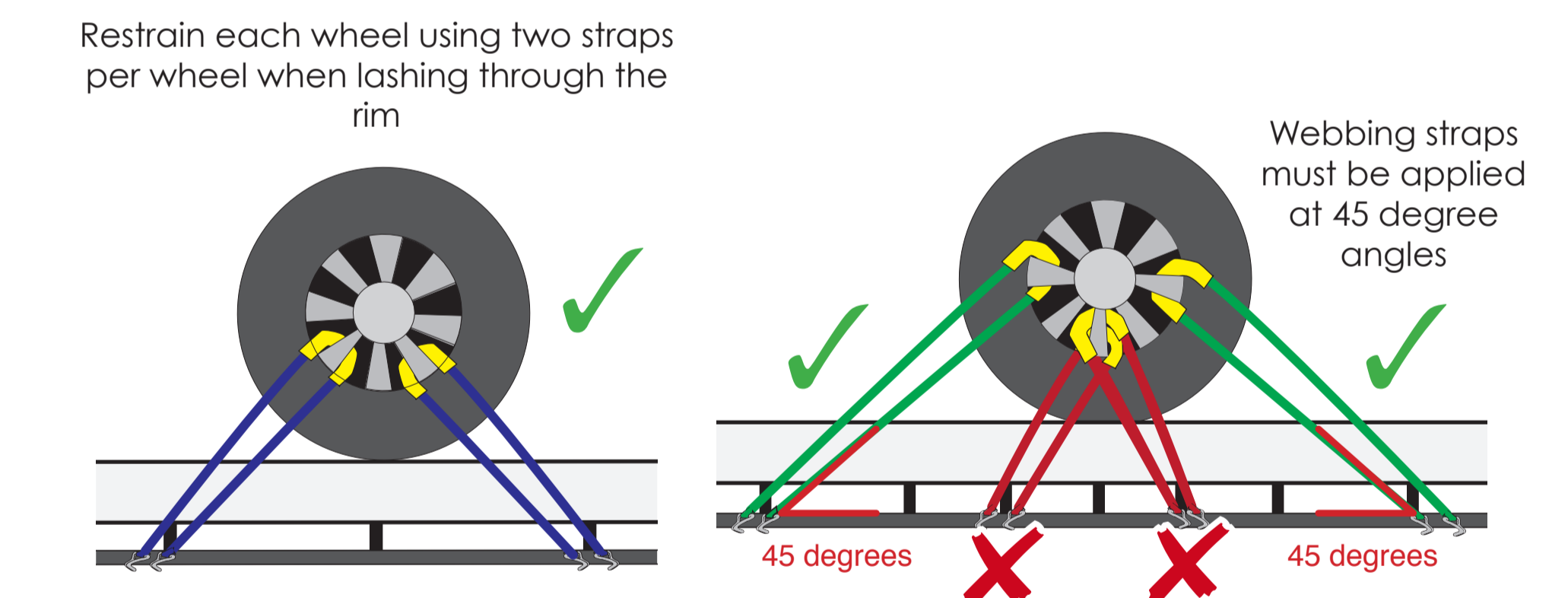
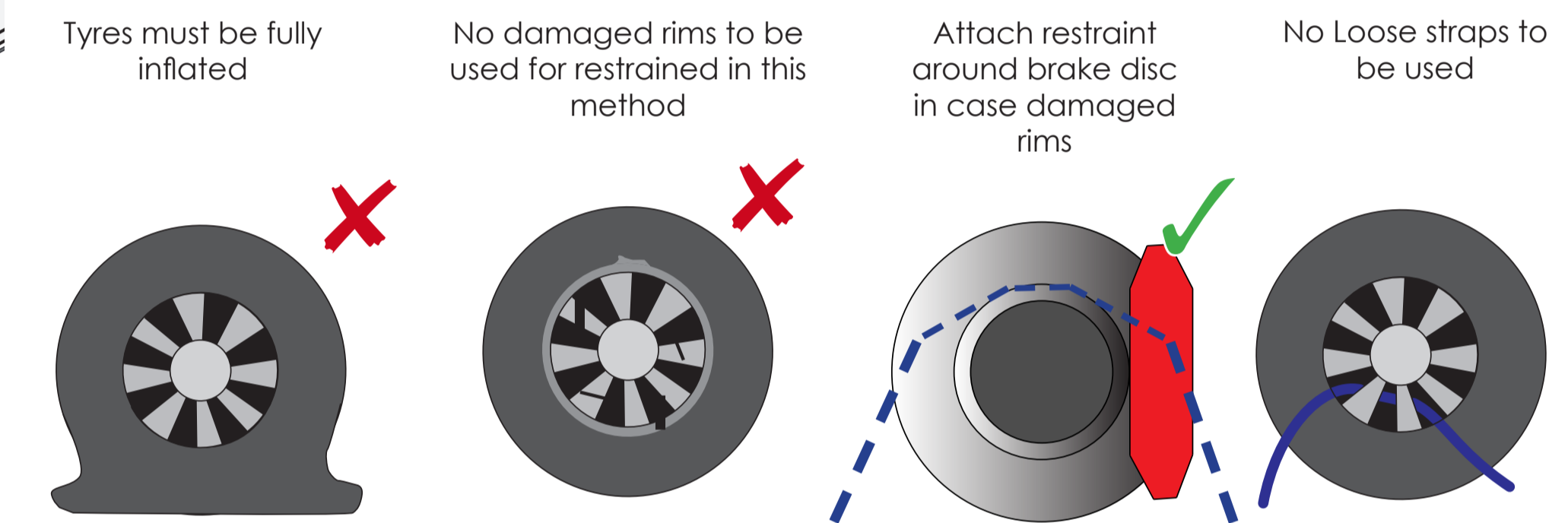
Restraint Requirements:

Vehicles with rubber tyres in good condition and fully inflated:



Vehicles with rubber tyres and rims in poor condition and/or deflated:

In the case where a single tyre is partially or fully deflated, proceed to fully deflate the tyre and restrain through the rims using the system detailed below.



Vehicles without tyres:

